

**JOSLYN HOUSE
ENERGY RETROFIT**
RANDOLPH, VERMONT

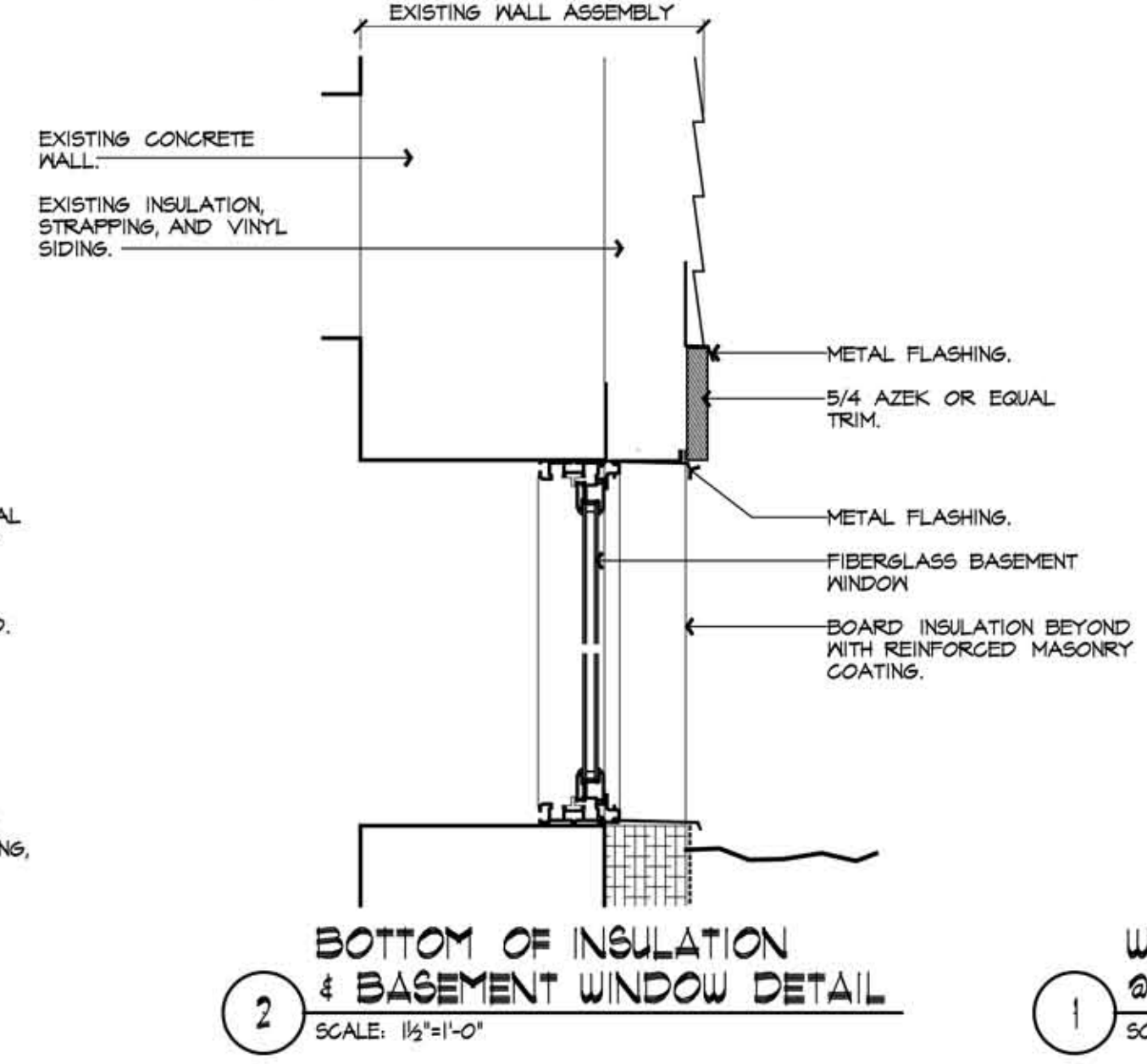
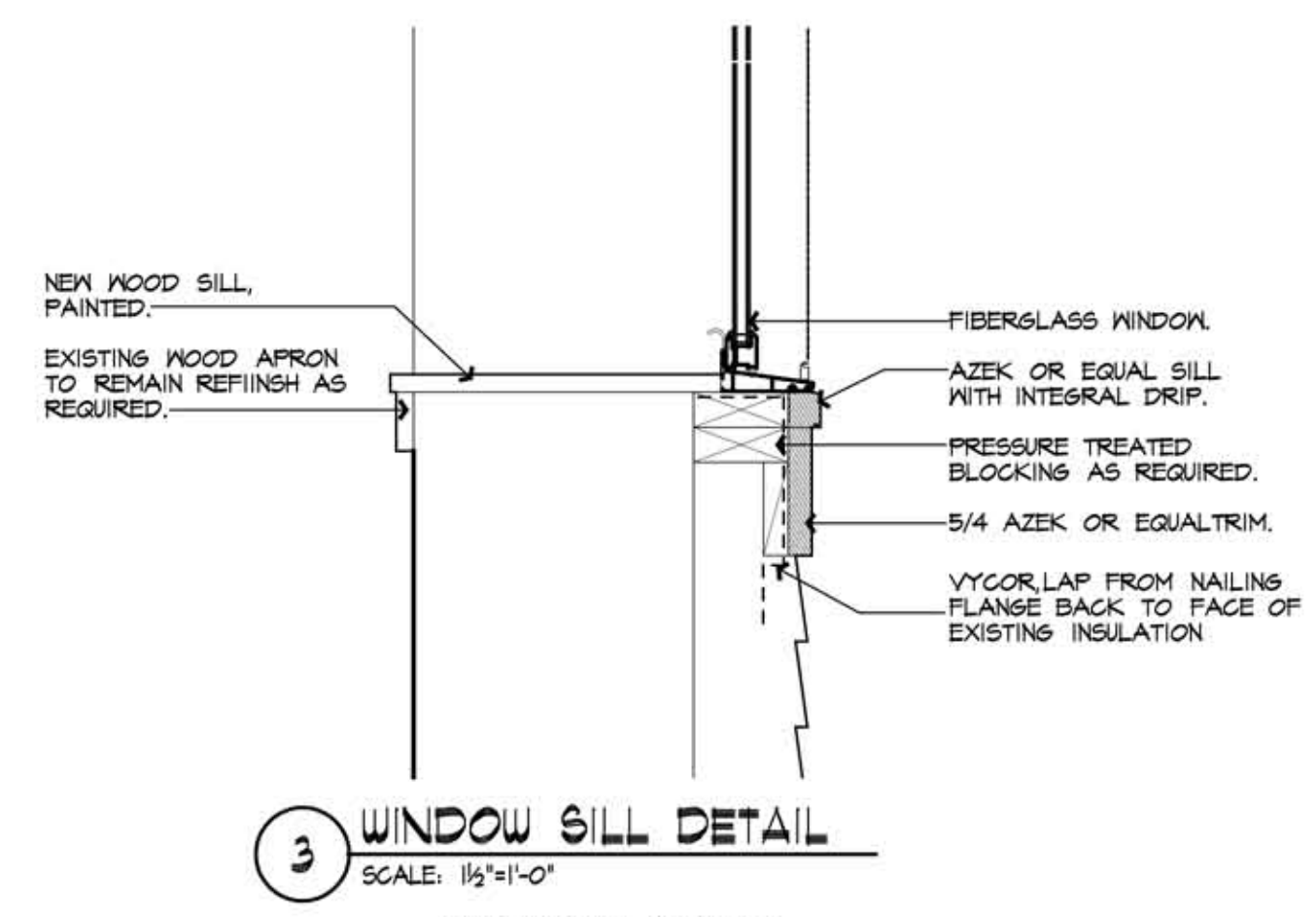
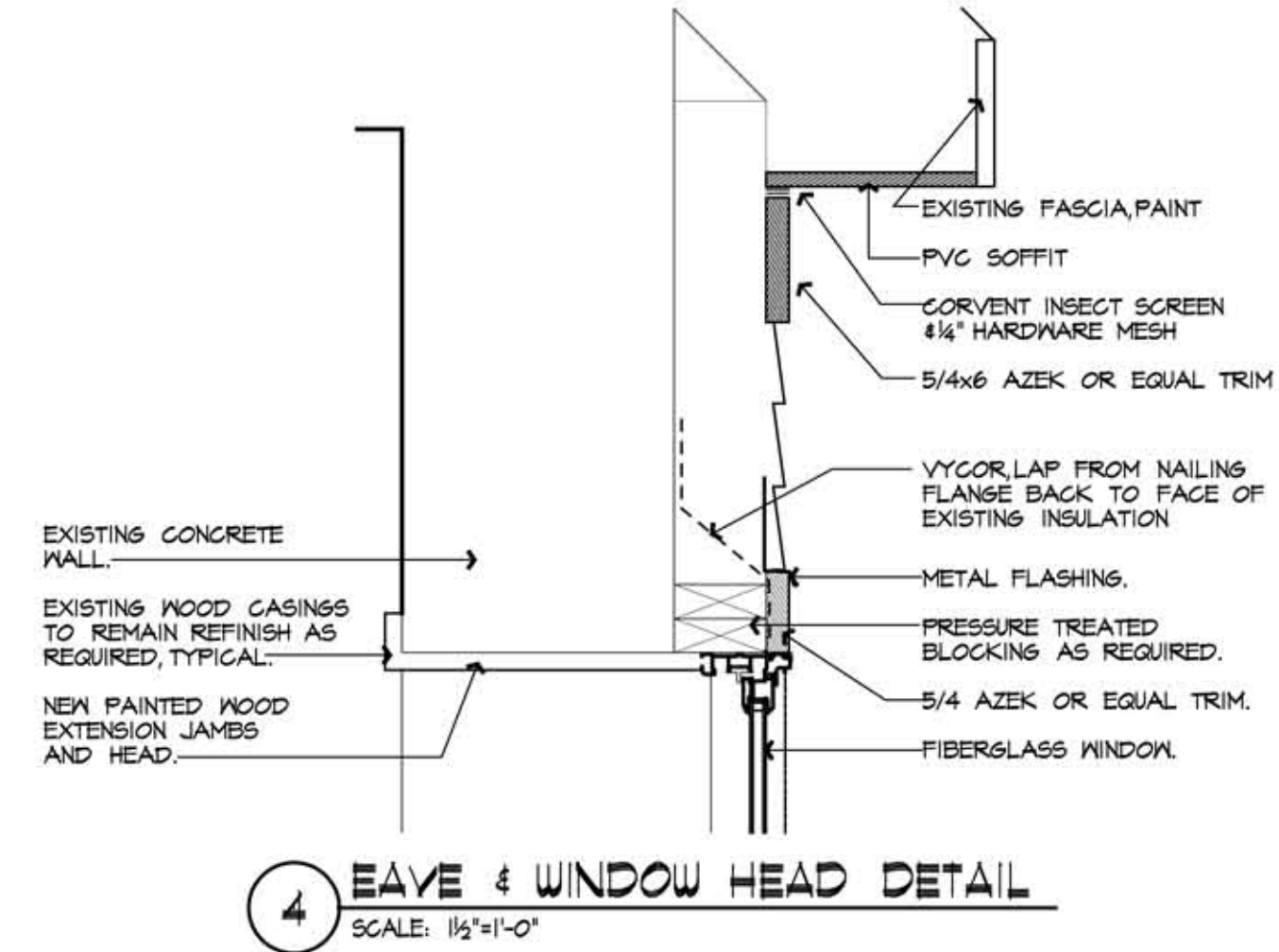
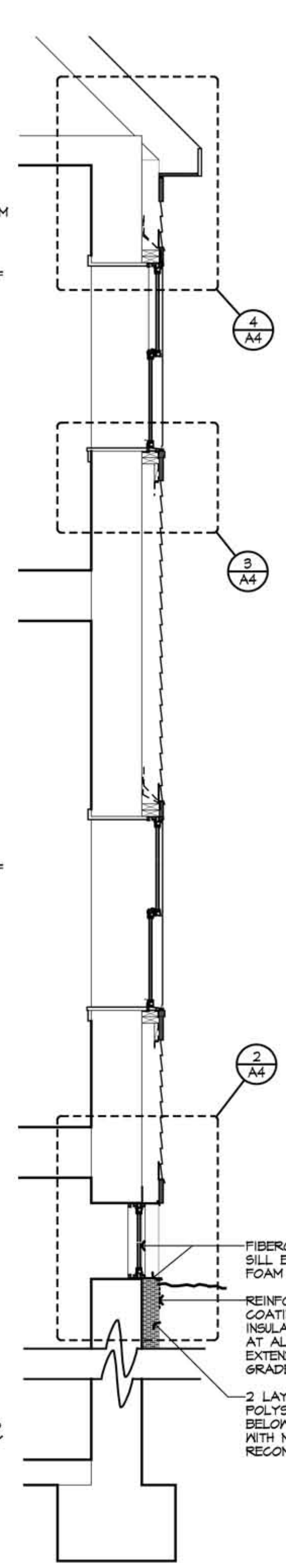


BLACK RIVER DESIGN
73 MAIN STREET
MONTPELIER VERMONT 05602

REVISIONS
4/15/11 - FINAL

Concrete wall sections and details

SCALE AS NOTED
DATE SEPT. 24, 2010
DRAWN BY TAM, JJR
CHECKED BY TAM



NOTE: USE SIMILAR DETAILS AT EXISTING WOOD FRAME PORTION OF BUILDING & ADJUST JAMB EXTENSIONS, SILLS & HEADS ACCORDINGLY

