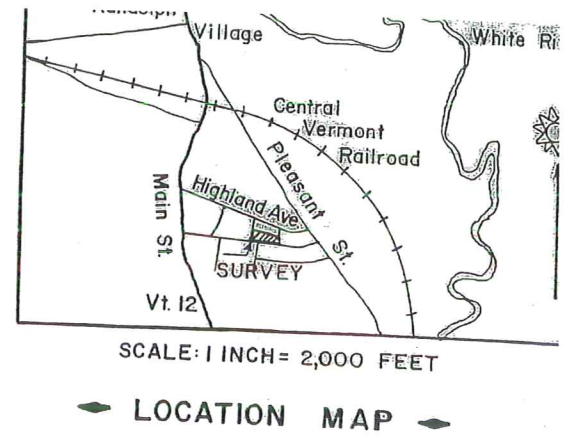
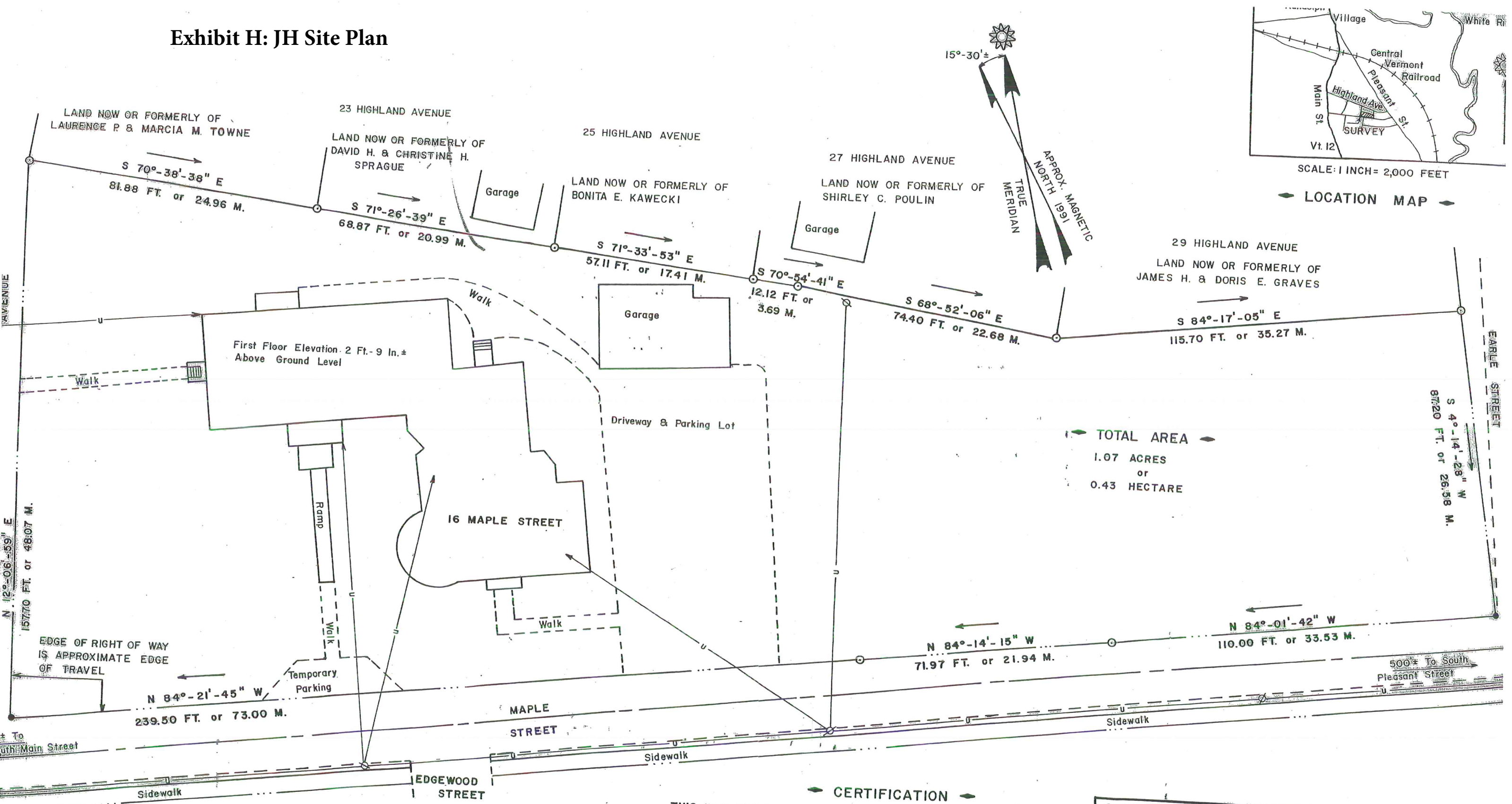


Exhibit H: JH Site Plan



TOTAL AREA
1.07 ACRES
or
0.43 HECTARE

- LEGEND**
- IRON PIPE FOUND FLUSH OR BURIED
 - COMPUTED POINT
 - ⊕ UTILITY POLE
 - AERIAL UTILITY LINES
 - - - - - APPROX. CENTERLINE OF TRAVEL
 - ⋯ APPROX. EDGE OF TRAVEL
 - ⋯⋯ APPROX. EDGE OF RIGHT OF WAY

CERTIFICATION

THIS WAS SURVEYED TO BEST CONFORM TO DEEDS AND MAPS FOUND ON RECORD IN THE RANDOLPH MUNICIPAL OFFICES AND TO EXISTING PHYSICAL EVIDENCE FOUND AT THE SITE. PARTICULAR ATTENTION WAS GIVEN TO A 1910 SURVEY BY F. L. DUDLEY RECORDED AT BOOK 35; PAGE 566.

THIS WAS SURVEYED BY A SIX SECOND THEODOLITE AND ELECTRONIC DISTANCE METER "TOTAL STATION" CLOSED TRAVERSE PURSUANT TO V. S. L. S. STANDARDS WITH A PRECISION RATIO OF 1:13,036.

THE BEARINGS ARE ASTRONOMICALLY TRUE AND THE TRUE MERIDIAN IS BASED ON SOLAR OBSERVATIONS TAKEN BY THE HOUR ANGLE METHOD AT 72° 30' ±

SURVEY OF PART OF THE VT. EASTERN STA HOME, INC. PROPERTY IN RANDOLPH, VT. FOR RANDOLPH NEIGHBORHOOD HOUSING SERVICE

