

**JOSLYN HOUSE  
ENERGY RETROFIT**  
RANDOLPH, VERMONT



**BLACK  
RIVER  
DESIGN**

73 MAIN STREET  
MONTEPELIER, VERMONT 05602

**REVISIONS**

4/15/11 - FINAL

**WALL SECTIONS  
AND DETAILS**

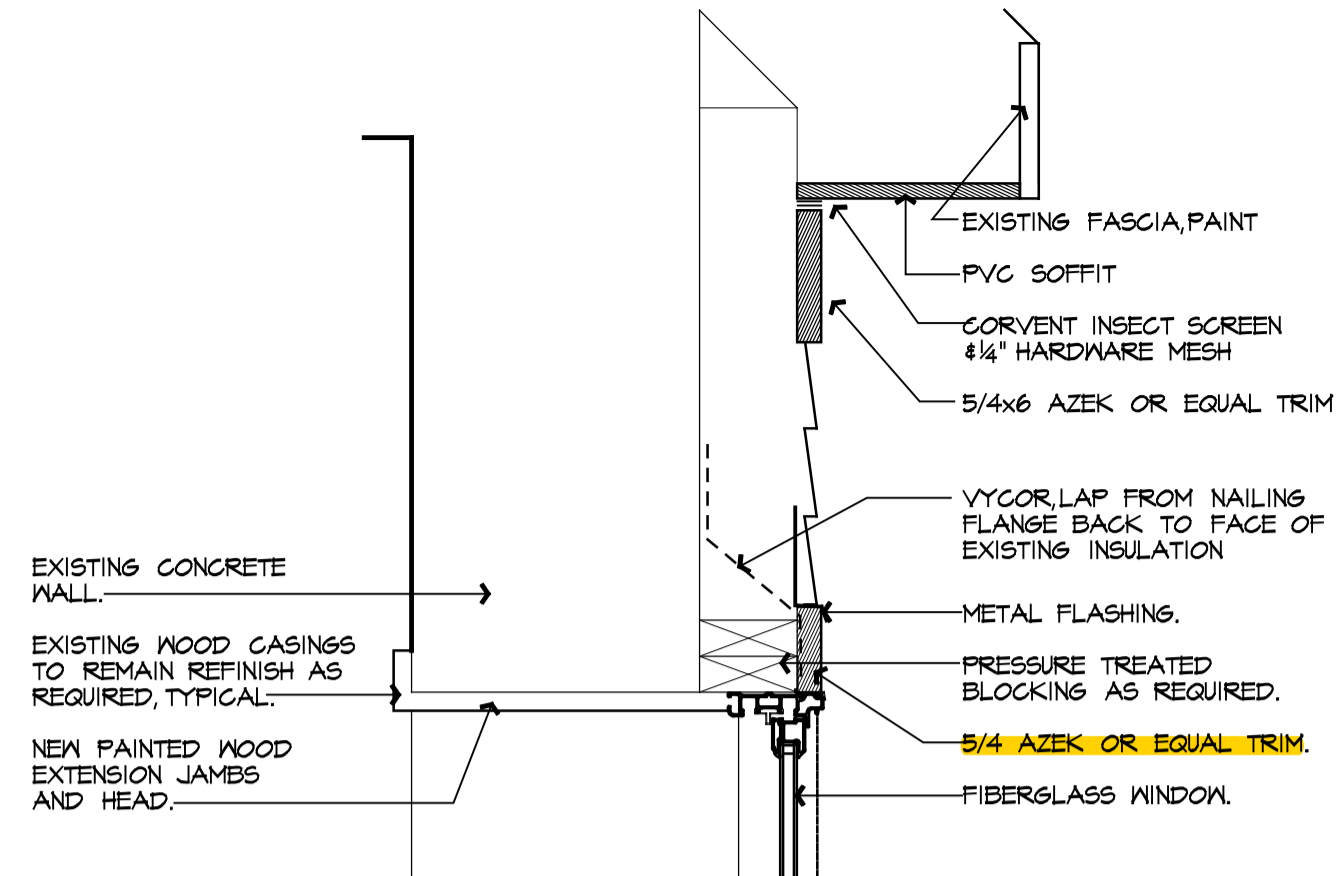
**SCALE**  
AS NOTED

**DATE**  
SEPT. 24, 2010

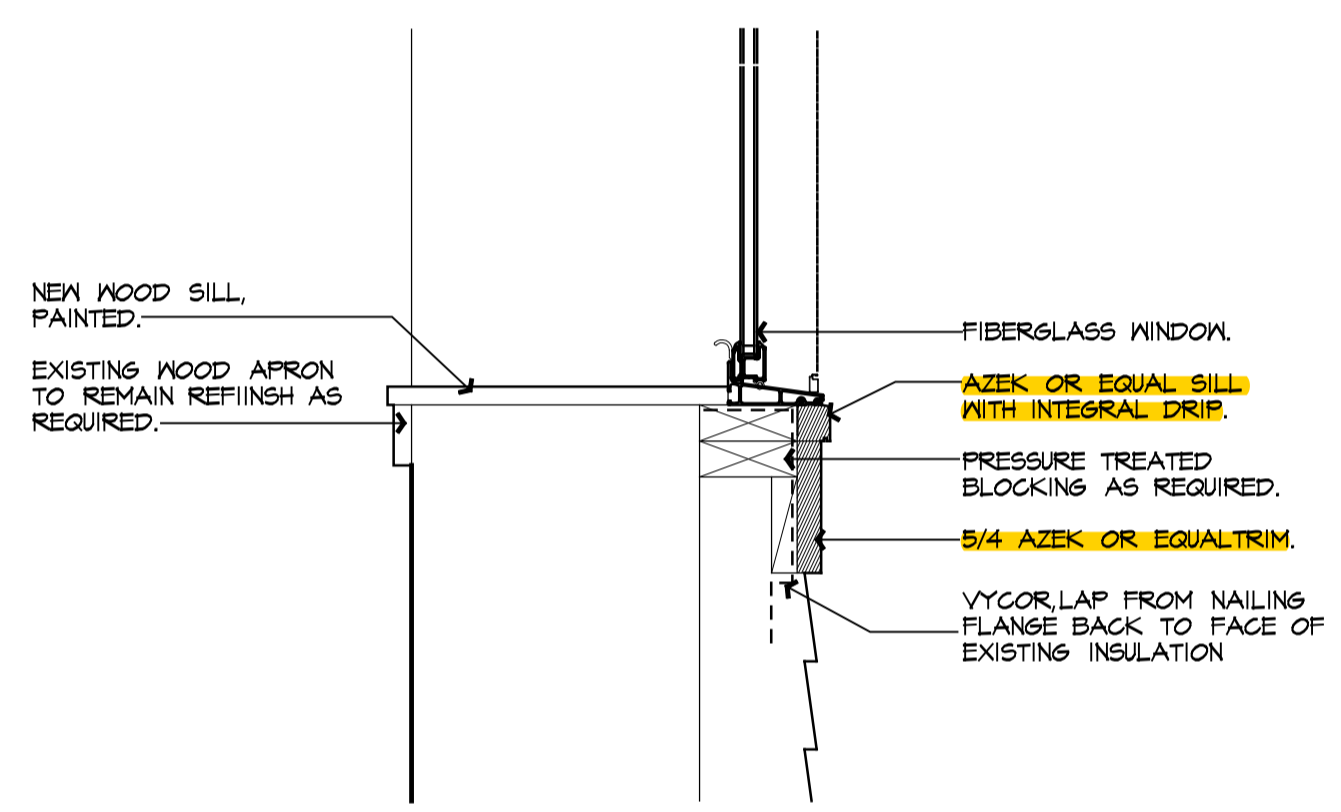
**DRAWN BY**  
TAM, JJR

**CHECKED BY**  
TAM

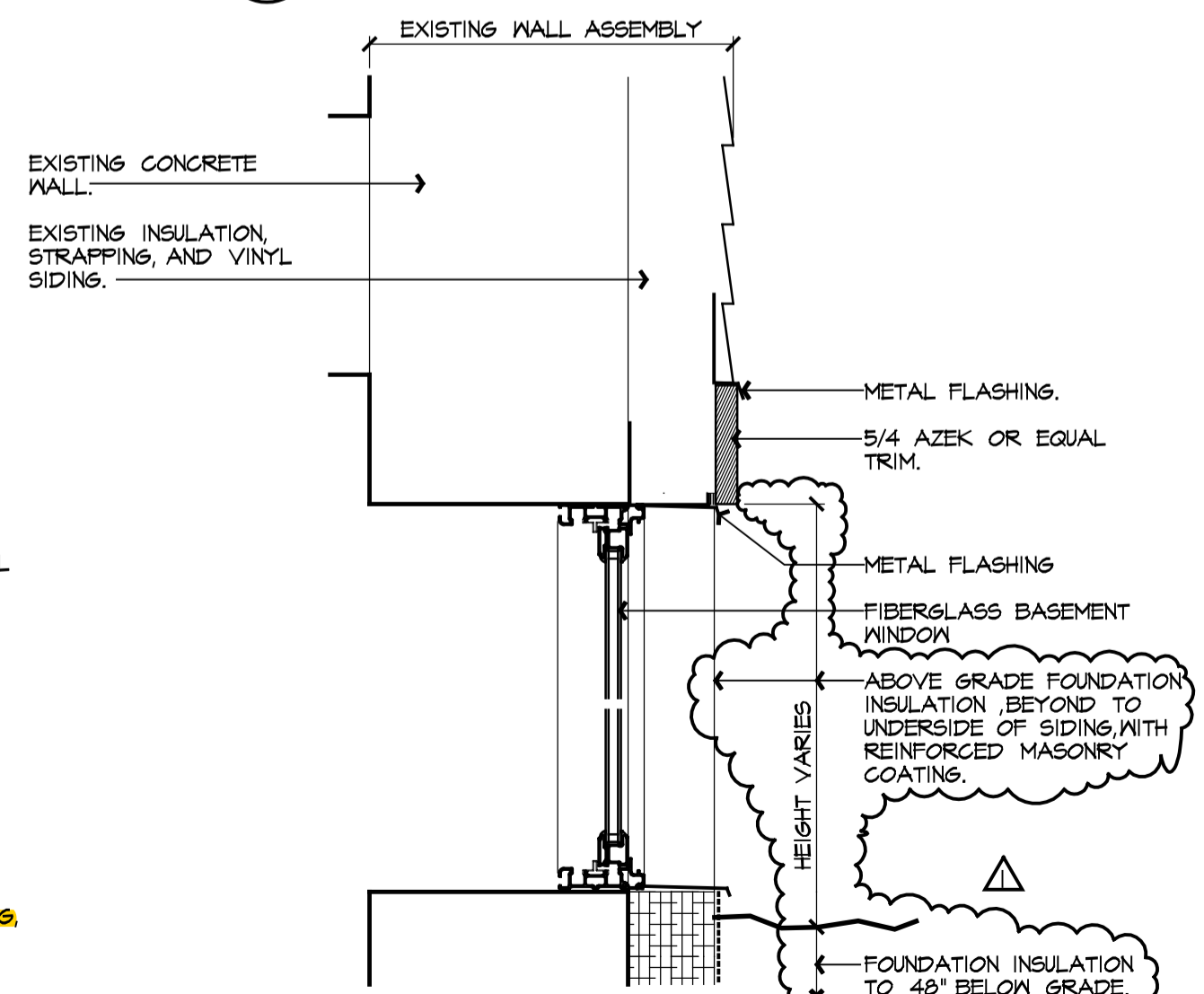
**A3**



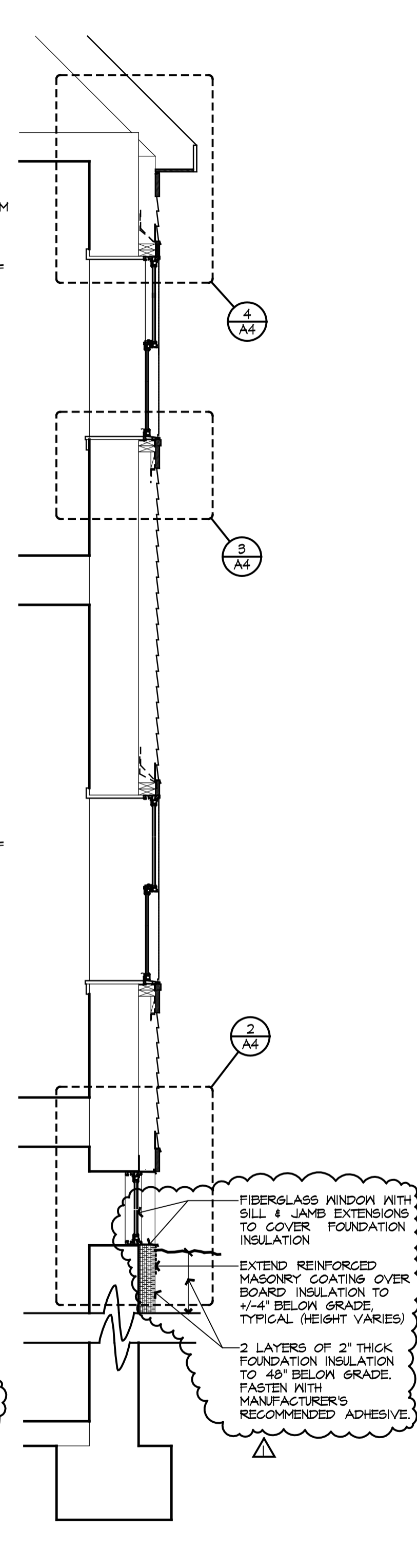
**4 EAVE & WINDOW HEAD DETAIL**  
SCALE: 1/2"=1'-0"



**3 WINDOW SILL DETAIL**  
SCALE: 1/2"=1'-0"

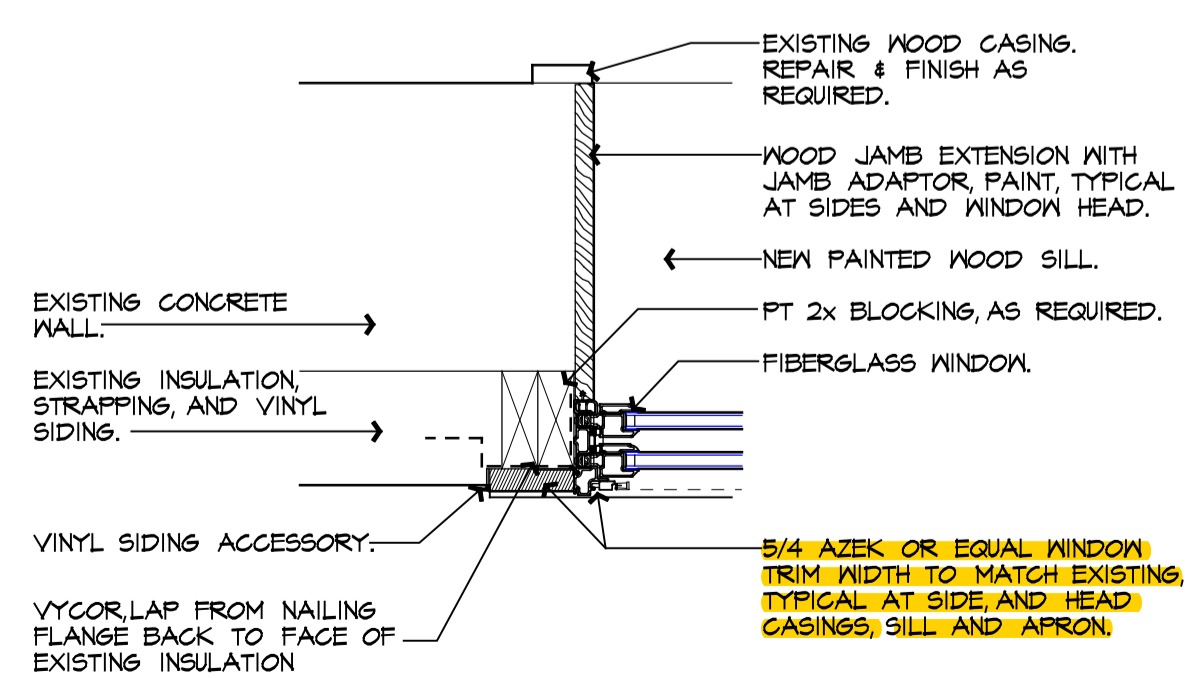


**2 BOTTOM OF INSULATION & BASEMENT WINDOW DETAIL**  
SCALE: 1/2"=1'-0"



**1 WALL SECTION @ EXISTING CONCRETE WALLS**  
SCALE: 1/2"=1'-0"

NOTE: USE SIMILAR DETAILS AT EXISTING WOOD FRAME PORTION OF BUILDING & ADJUST JAMB EXTENSIONS, SILLS & HEADS ACCORDINGLY



**5 CONCRETE JAMB SECTION**  
SCALE: 1/2"=1'-0"